



Friendship Block Exchange Group

By Shirley Zane

Get ready to dive through your scraps and share them with quilting friends!

Please use high quality 100% cotton quilt shop fabrics in assorted scraps.

Assorted Prints: Cut 320 @ 2.5 x 2.5-inch squares
240 @ 2.5 x 6.5-inch rectangles

Assemble a total of 16 packets to exchange with guild members. You will keep one packet for yourself. Each packet will contain:

20 Assorted 2.5 x 2.5-inch squares

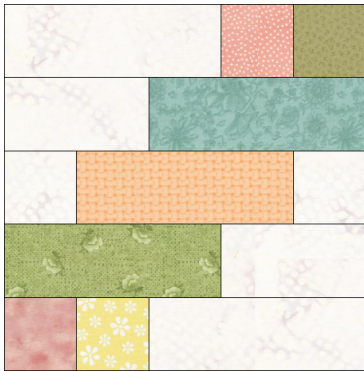
15 Assorted 2.5 x 6.5-inch rectangles

Select a light-colored 6.5-inch strip from each packet and write your name with a permanent fine Micron Pen. You may find it helpful to iron a strip of freezer paper (waxy side) to the wrong side of your fabric strip to stabilize while writing your name.

Place packets in large zip lock bags or envelopes. Write your name on the outside of each packet. Have all your packets prepared to exchange at the HVQ Guild Retreat on March 25, 2016. If you are not able to attend, give your packets to Shirley Zane.

In addition, you will also need a neutral background fabric. Each of the packets will make 5 blocks when combined with background fabric. Use yardage go or scrappy with the background, as long as there is contrast with the main prints. Background fabric will be cut in 2.5-inch WOF strips and subcut into 2.5-, 4.5- and 6.5-inch pieces.

2016 Heber Valley Quilters Friendship Exchange Block Instructions



Each block will require:

4 @ 2.5-inch assorted print squares

3 @ 2.5 x 6.5-inch print rectangles

2 each @ 2.5 x 2.5-, 4.5- and 6.5-inch background pieces

Assemble each block as diagrammed.

40 x 40" Baby Throw = 16 blocks

1 yard Background ~ Cut 32 each @ 2.5 x 2.5-, 4.5- and 6.5-inch background pieces

60 x 60" Lap Quilt = 36 blocks

2-1/8 yards Background ~ Cut 72 each size background pieces

60 x 80" Twin = 48 blocks

2-3/4 yards Background ~ Cut 96 each size background pieces

80 x 80" Full/Picnic = 64 blocks

3-1/2 yards Background ~ Cut 128 each size background pieces

80 x 100" Queen = 80 blocks

4-1/2 yards Background ~ Cut 160 each size background pieces

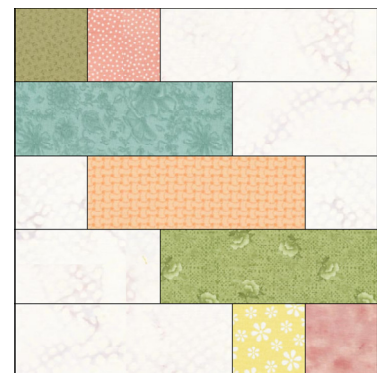
100" x 100" King = 100 blocks

5-1/2 yards Background ~ Cut 200 each size background pieces

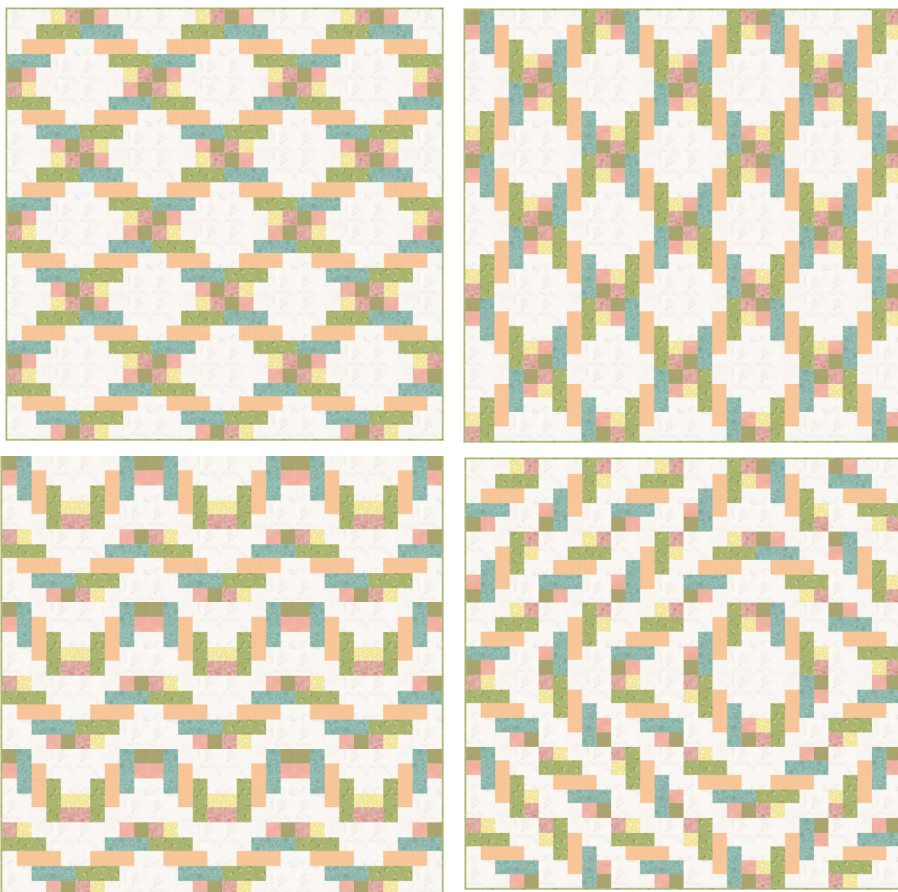
LAYOUT & DESIGN

You may wish to assemble half of your blocks in reverse order:

Now it's time to play! Lay out your blocks in an "O" format or "X" format, maybe try a Chevron layout.



Below is a sample of what the quilts would look like with every other block constructed in reverse.



And here are some samples of layout options with all blocks constructed the same: Of course the blocks will all be scrappy, but this gives you an idea.

