



140 S Freeman Ave
Idaho Falls, ID
208-528-7879

www.theblackbirdhaven.com

Slash a Stash

Quilt Size- 46½" x 58" ♥ Finished Block size -- 11½" x 11½"

Kit Includes

- 12 Different squares - 6" x 6"
- 12 Different strips - 3½" x width of fabric
- Border 1 fabric -- 12½"
- Border 3 fabric -- ¾ yard
- Binding fabric -- ½ yard

CUTTING INSTRUCTIONS

Block centers (Your twelve - 6" squares are already cut)
12 different squares -- 6" x 6" (A)

Block edges

- Cut 2 rectangles -- 3½" x 6" (B)
- Cut 2 rectangles -- 3½" x 12" (C)

Border 1

- Cut 5 strips -- 2" x width of fabric
- Seam strips together to get needed length

Border 2

From left over Block edge scraps...

- Cut strips 1¾" x various lengths
(Strips will vary in length from 4" to 6")
- Seam strips together

Border 3

- Cut 6 strips -- 3½" x width of fabric
- Seam strips together to get needed length

Binding

- Cut 7 strips -- 2½" x width of fabric

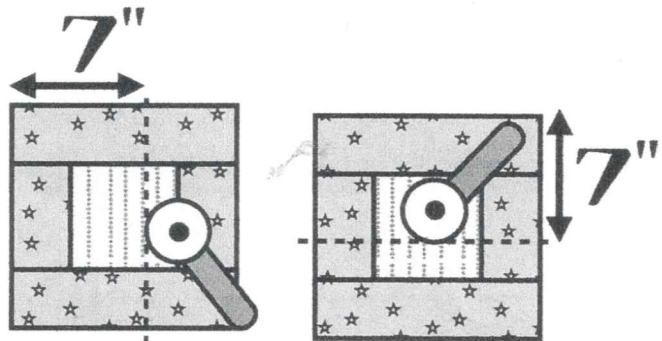
SLASH BLOCK ASSEMBLY

Step 1. Seam a yellow rectangle (B) to the either side of a green square (A). Press toward yellow. Seam a yellow rectangle (C) to the top and bottom of a unit as shown below Press toward yellow.

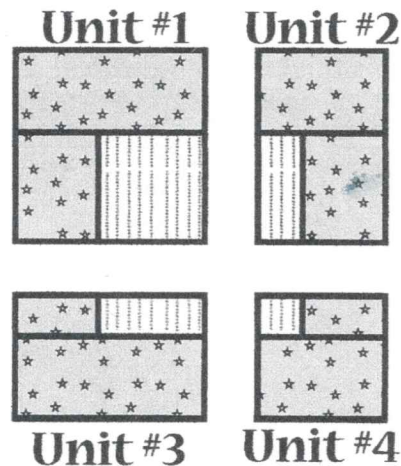


Step 2. Replace *Square A* with a different fabric. Replace *Strips B* and *C* with different fabrics; making sure *B* and *C* strips are from the same fabric. Mixing and matching as you would like. Repeat process until you have made 12 *Slash Blocks*. Square blocks to 12" x 12".

Step 3. Cut the *Slash Block* in half 7" in from the left side. Now, cut the *Slash Block* 7" from the top.



This will form *Units #1* thru *#4* as shown below. Repeat process with all 12 blocks.



Step 4. Shuffle *Units* and seam the pieces back together; matching *Units* from 4 different blocks. Make 12 different blocks; making sure *Units 1* thru *4* are placed in the same order as shown in *Step 3*.

